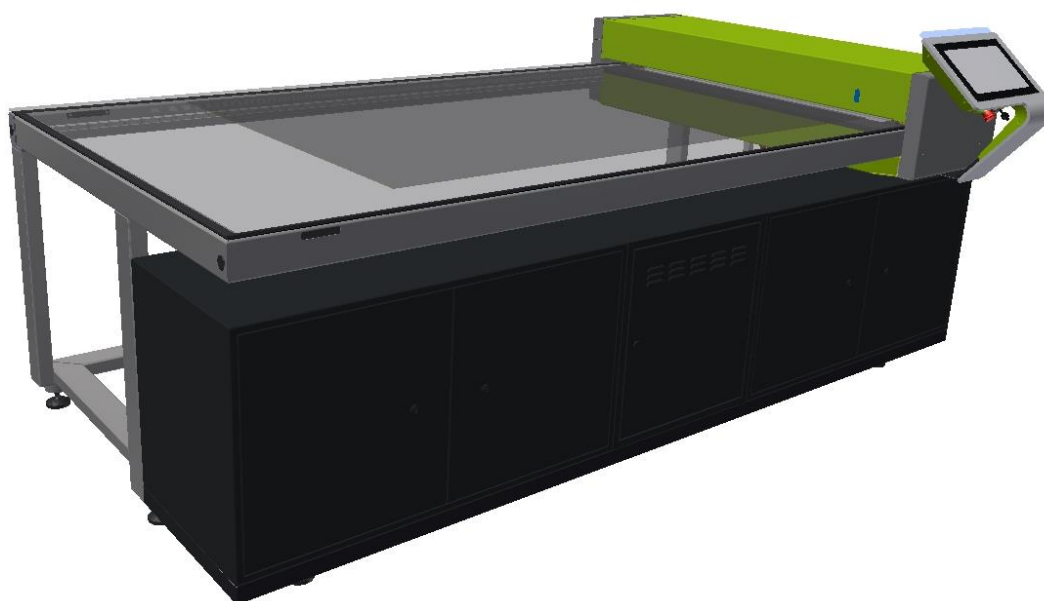


XPS CRYSTAL TOUCH 16.0

USER MANUAL



06.06.2017 v1.3

ESKO*

© Copyright 2017

Esko-Graphics Imaging GmbH, 25524 Itzehoe, Germany

All rights reserved. This document and all information and instructions contained within are the property of Esko-Graphics. These documents contain the product descriptions according to their current state at the time of publication, but no responsibility whatsoever is taken for the correctness of this information. No guarantees are granted or expanded upon by this document. Furthermore, Esko-Graphics does not guarantee the illustrations relating to the usage of the products, or for the results from using the software or the use of the information contained herein. Esko-Graphics is not responsible for direct or indirect damages caused by the logical consequences or latent damages which may result from the use of the software, or from the impossibility of software use or of the information contained herein.

The technical data contained herein and the content of this manual are subject to change without prior notification. Revisions which point out such changes and/or supplements may be issued from time to time.

Without express written consent, no part of this document may be reproduced, transferred, electronically stored or published, irrespective of the reasons and irrespective of the method or means used, i.e. electronic, mechanical, by printing, microfilm, etc.

These documents replace all previous versions.

Grapholas® is a registered trademark of Esko-Graphics Imaging GmbH.

Cyrel®, Cyrel® Digital Imaging System and Cyrel® Digital Imager (CDI) are registered trademarks of DuPont.

Microsoft and the Microsoft Logo are registered trademarks of Microsoft Corporation in the USA and other countries.

Esko-Graphics software may include the "RSA Data Security, Inc. MD5 Message-Digest Algorithm".

JDF and the JDF Logo are trademarks of the CIP4-Organisation. Copyright 2001 The International Cooperation for the Integration of Processes in Prepress, Press and Postpress (CIP4). All rights reserved.

Java and all Java-based trademarks and logos are trademarks or registered trademarks of Sun Microsystems in the U.S. and/or other countries.

Some parts of this software use technologies of JGoodies, Barbecue (Copyright 2003, International Barcode Consortium), and Jakarta (licensed by Apache: www.apache.org/licenses/LICENSE-2.0.txt).

All other product names are trademarks or registered trademarks of their respective owners.

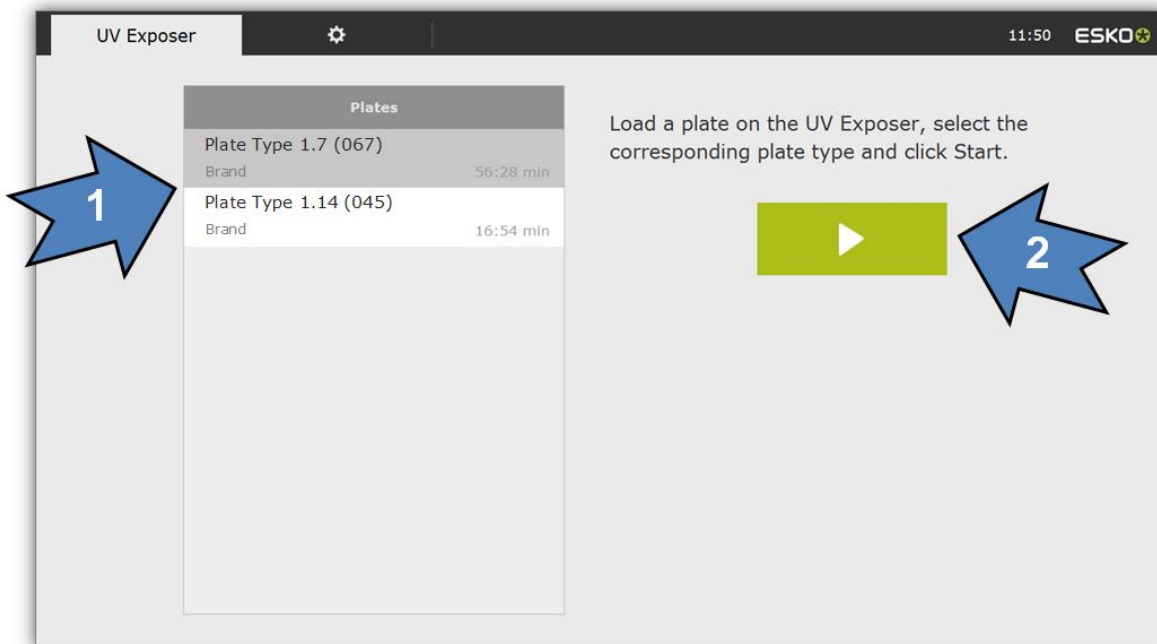
TABLE OF CONTENTS

Operation of the XPS Crystal Touch Software	4
START UV EXPOSURE.....	4
STOP UV EXPOSURE	5
ADD NEW PLATE TYPES.....	6
DELETE PLATE TYPE	7
CHANGE DESIRED RELIEF.....	8
UPDATE PLATE LIST DATABASE	9
CHANGE LANGUAGE	12
SWITCH UNITS (INCH/MM)	13
CHECK BACK EXPOSURE "CHECK FLOOR"	14
SHUT DOWN XPS CRYSTAL	17
CALL TEAMVIEWER FOR SERVICE	18
Support	18

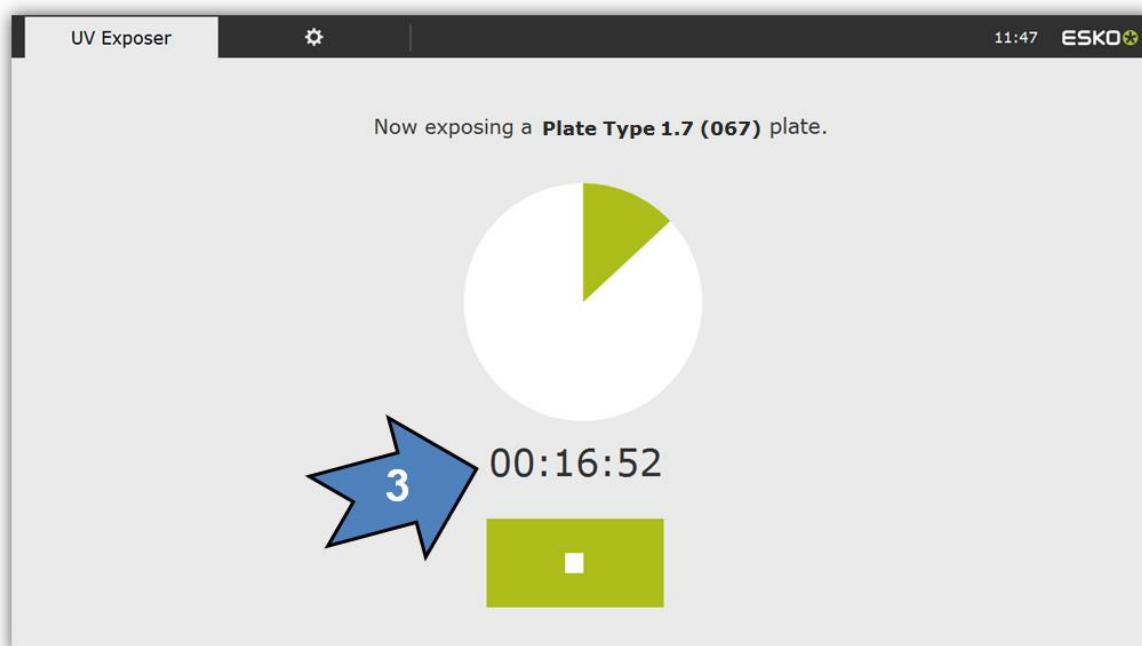
Operation of the XPS Crystal Touch Software

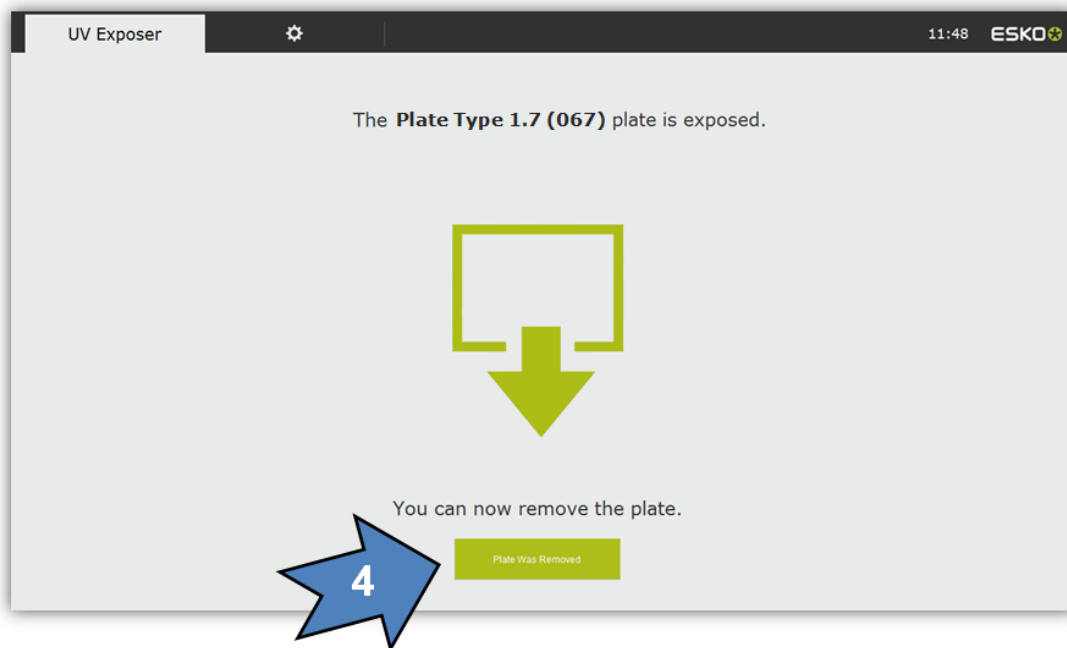
This software is designed for a touch-sensitive screen.

Start UV exposure



- 1 Select plate
- 2 Press the start button – exposure starts immediately
- 3 The remaining time is shown in the progress display

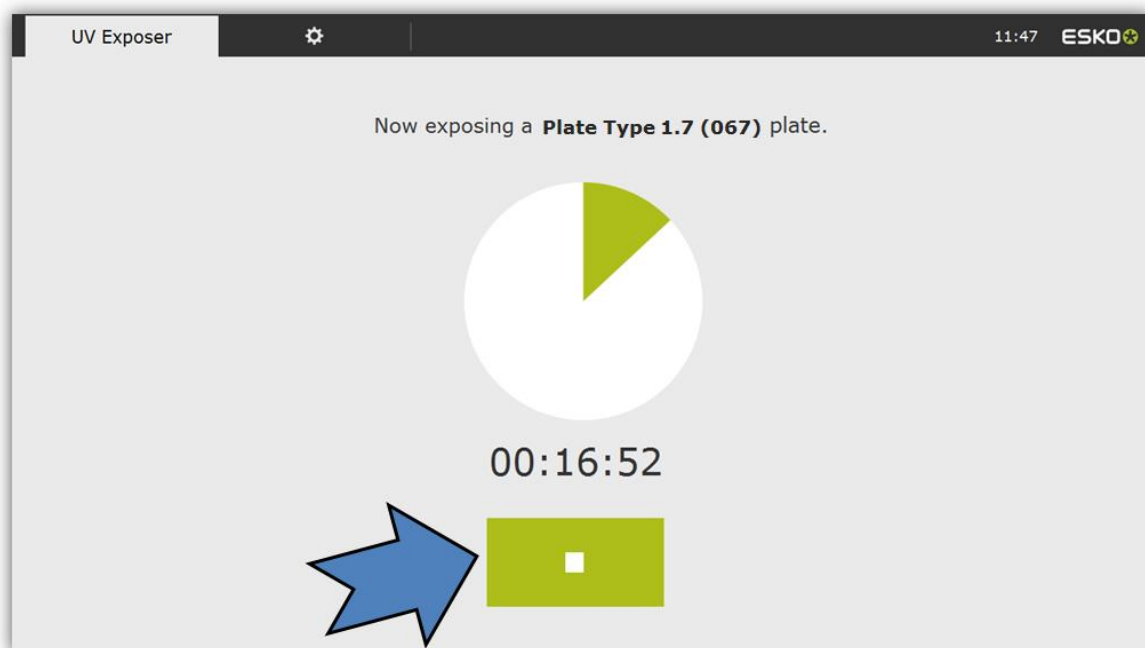




The end of the exposure is shown. The removal of the plate from the XPS Crystal must be confirmed (4).

Stop UV exposure

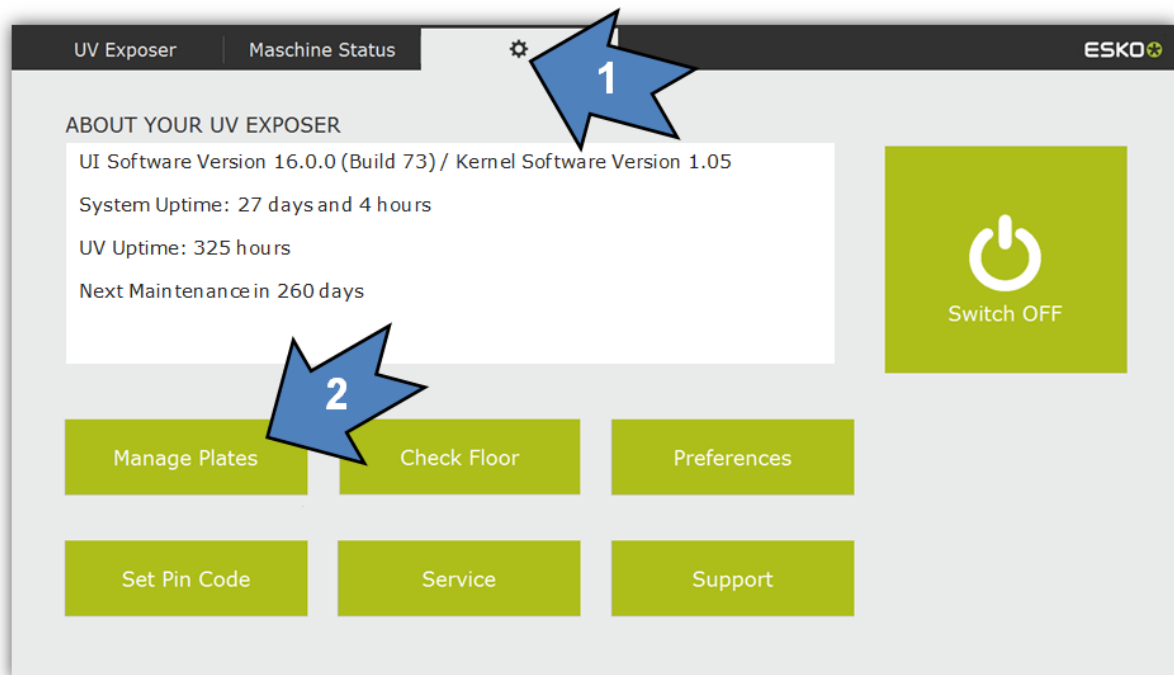
Exposure can be stopped at any time:



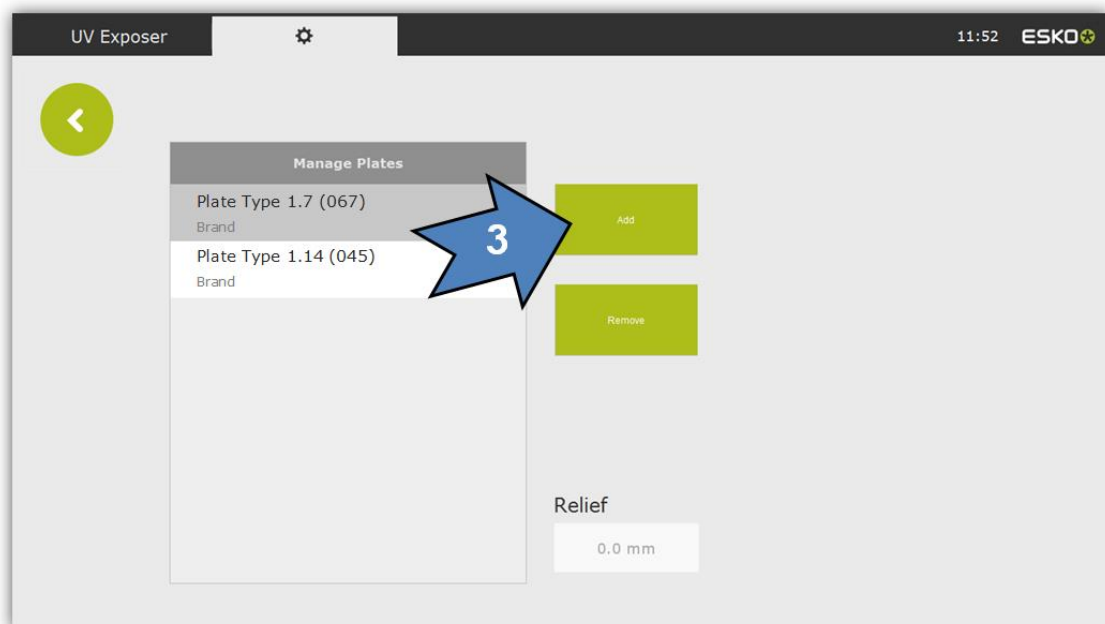
In this case, the plate is not exposed to UV fully and evenly!

Add new plate types

- 1 Select in the options menu
- 2 Select "Manage Plates"

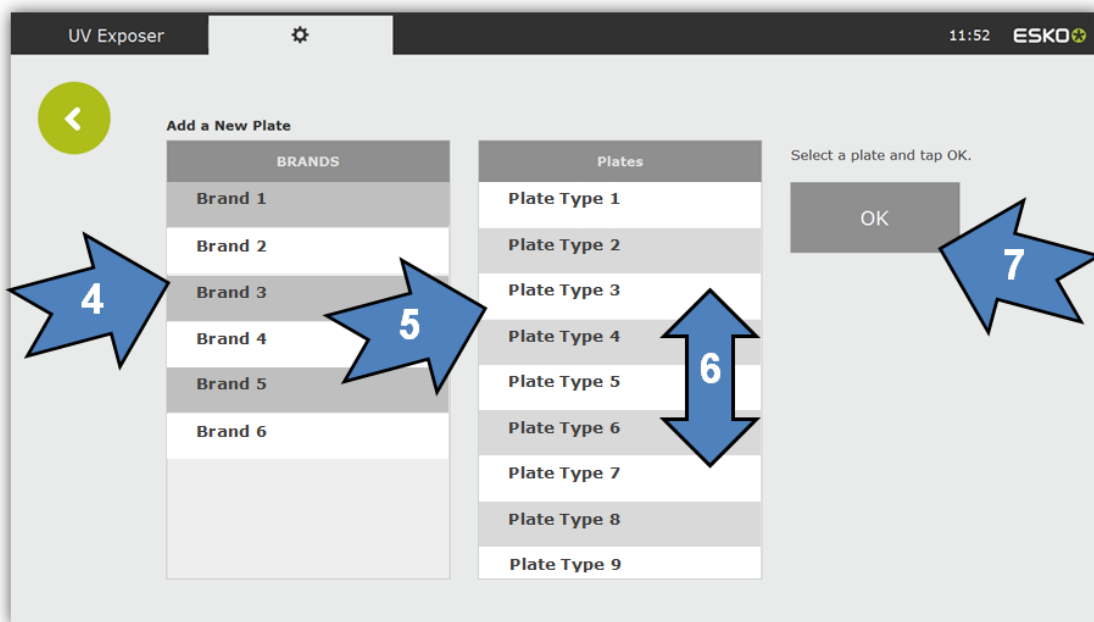


- 3 Select the "Add" field



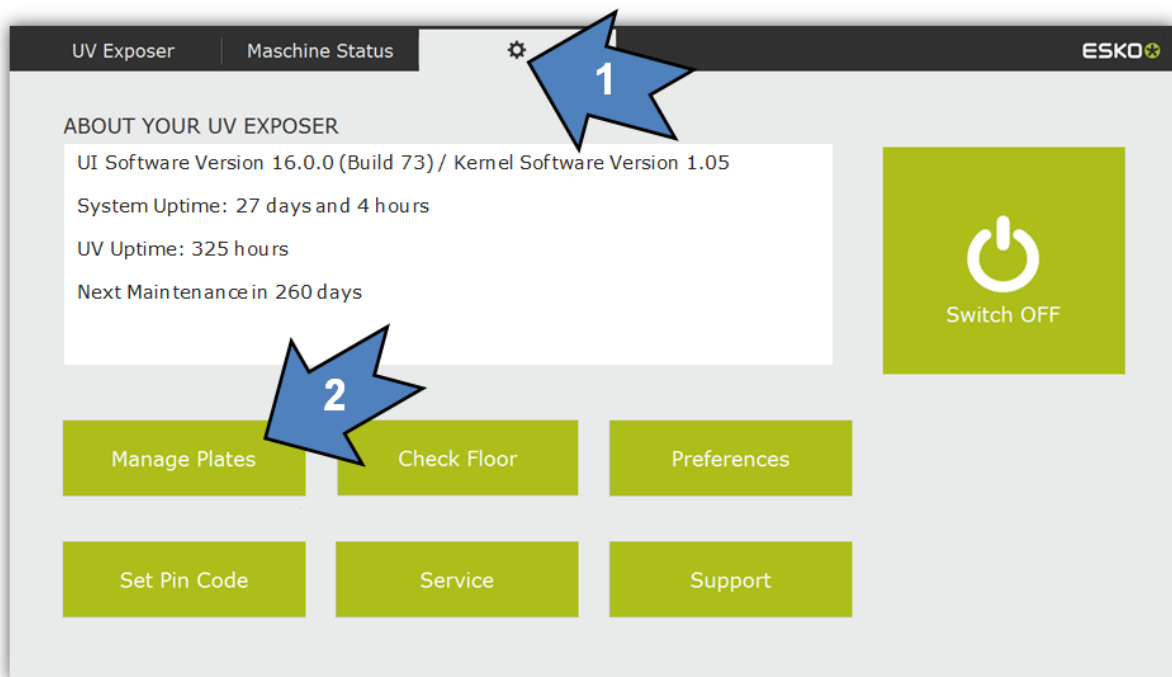
- 4 Select the plate manufacturer
- 5 Select the plate type
- 6 In long lists, the fields can be scrolled upwards and downwards

- 7 "OK" adds the plate to the active plate list

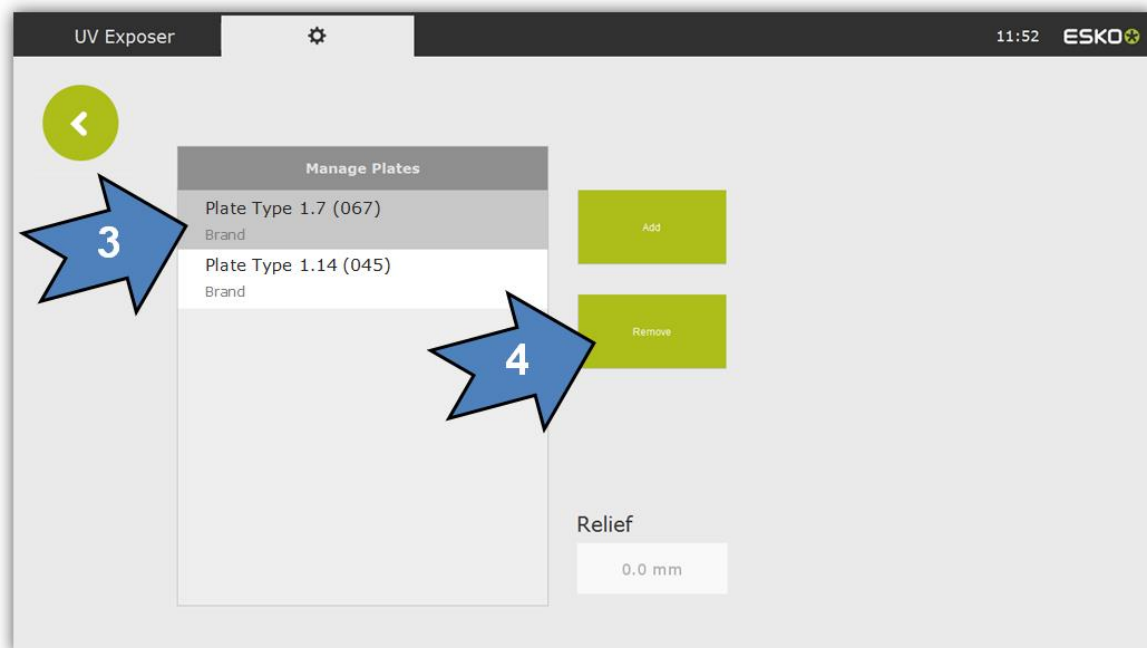


Delete plate type

- 1 Select in the options menu
- 2 Select "Manage Plates"

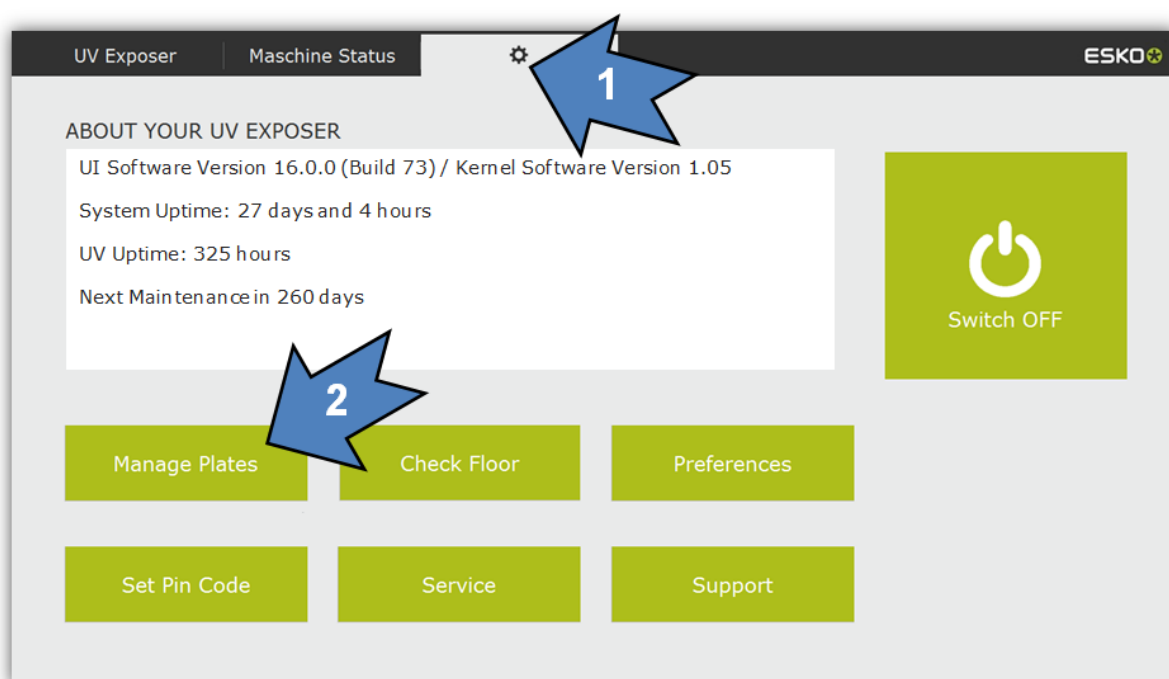


- 3 Select the plate type
- 4 Delete the plate type with "Remove"

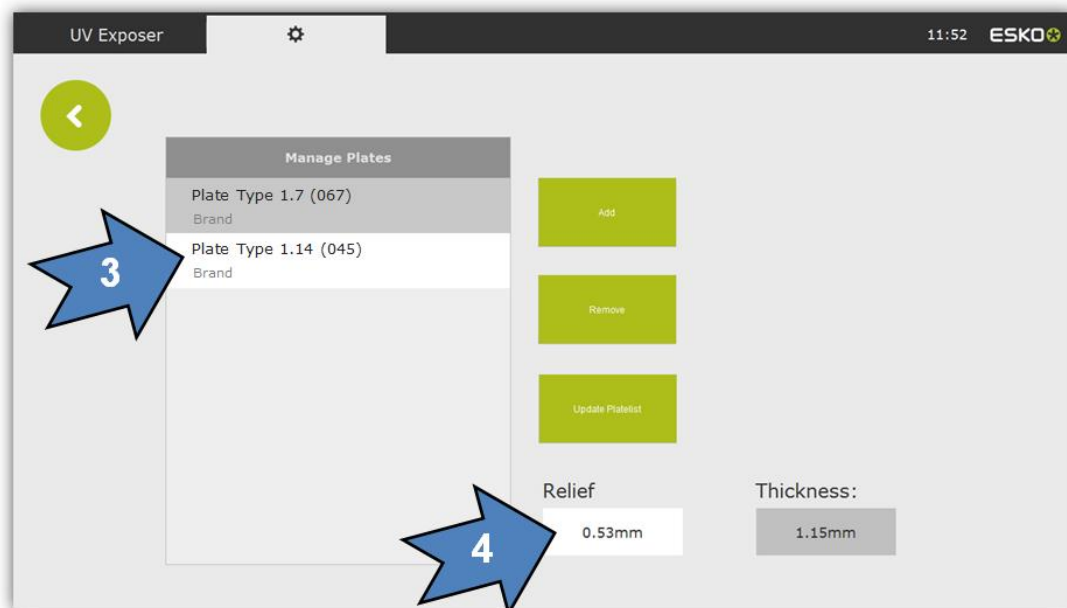


Change desired relief

- 1 Select in the options menu
- 2 Select "Manage Plates"



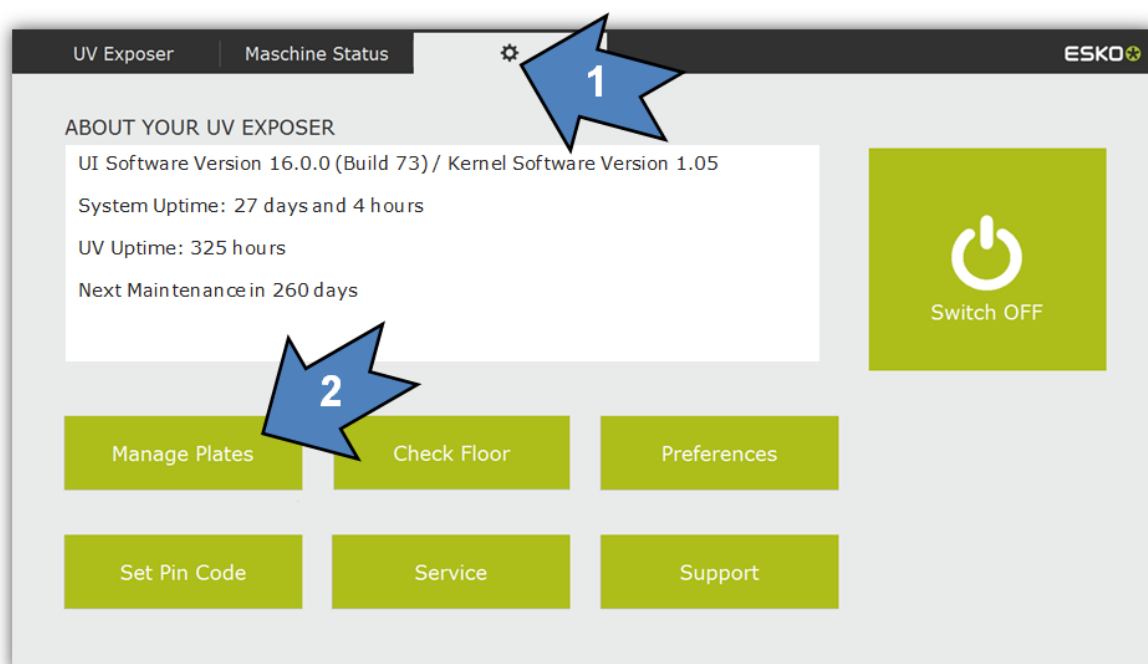
- 3 Select the plate type
- 4 Change the value to the select relief in the "Relief" field



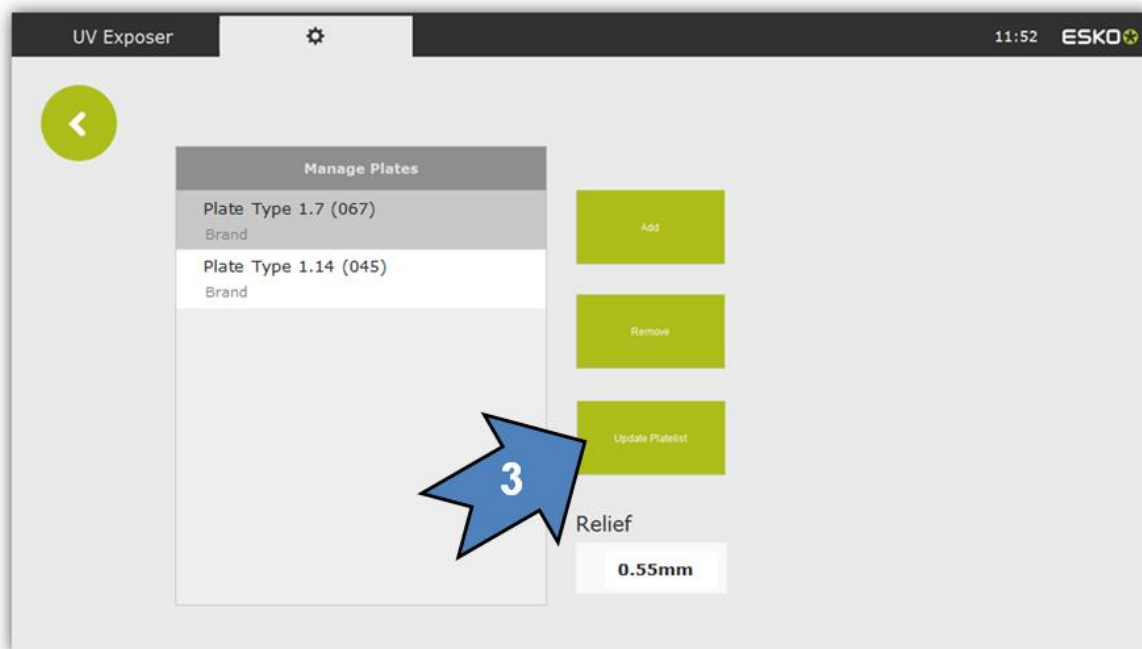
Update plate list database

Copy the plate database file to the main folder on a USB stick.

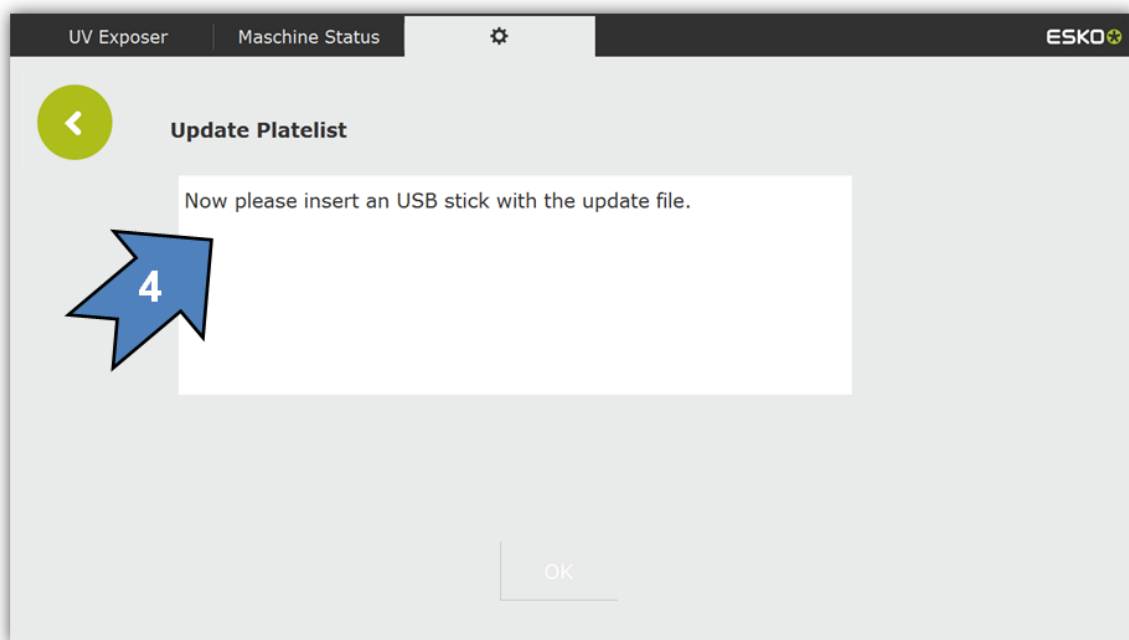
- 1 Select in the options menu
- 2 Select "Manage Plates"



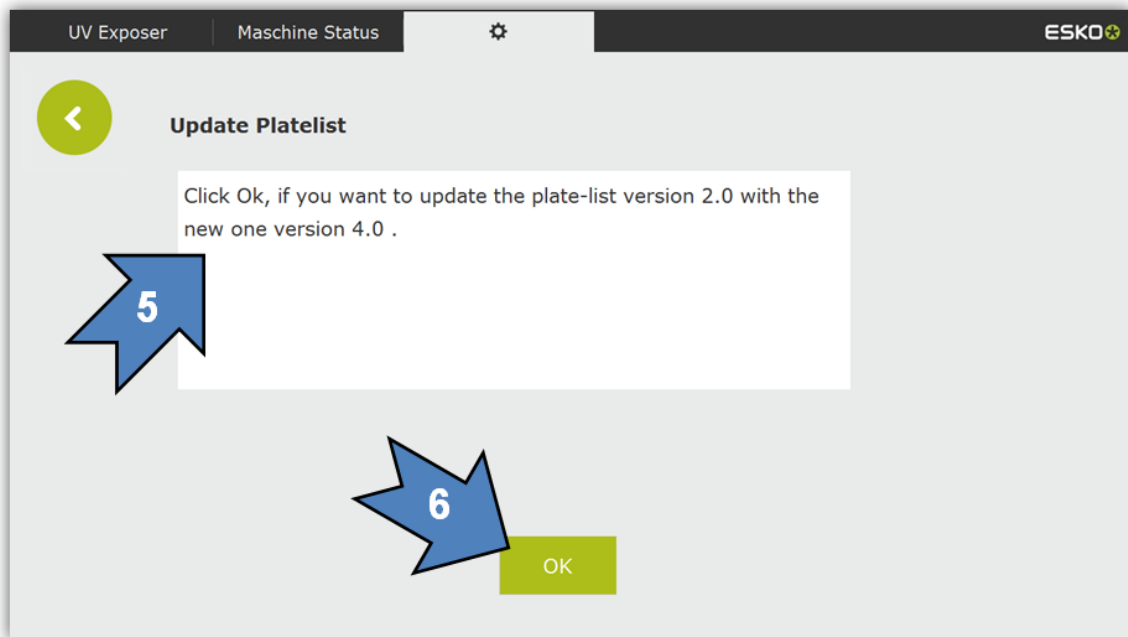
3 Select "Update Platelist"



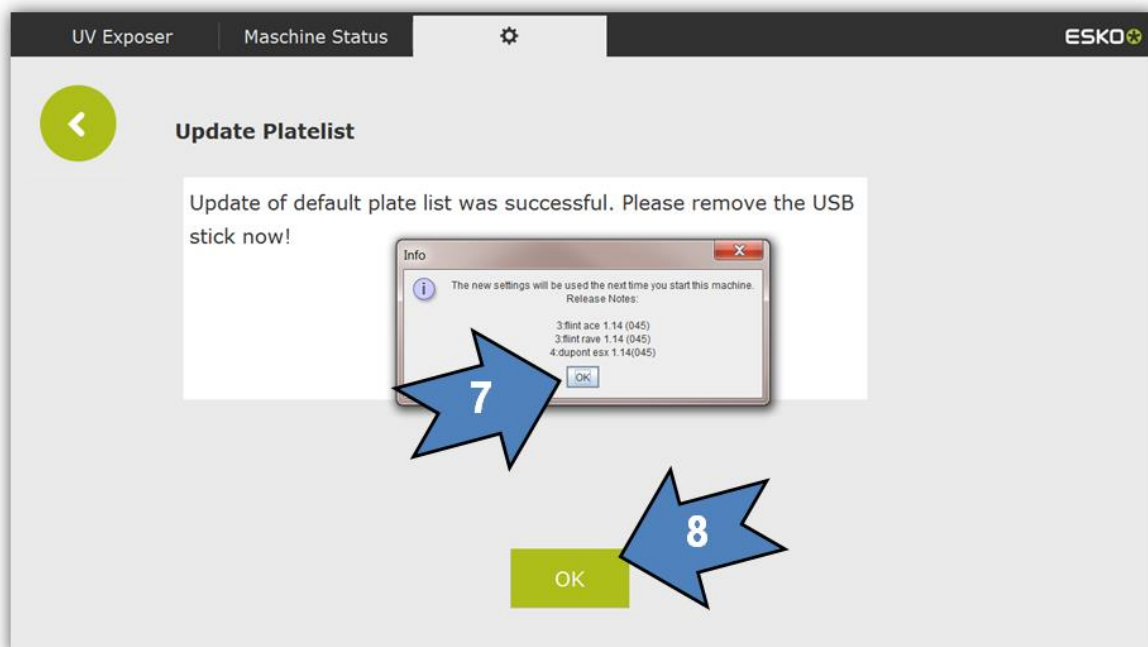
4 Follow the instructions and then insert the USB stick



- 5 When a valid file is found, the currently installed and new version are displayed
- 6 The database is updated with "OK"

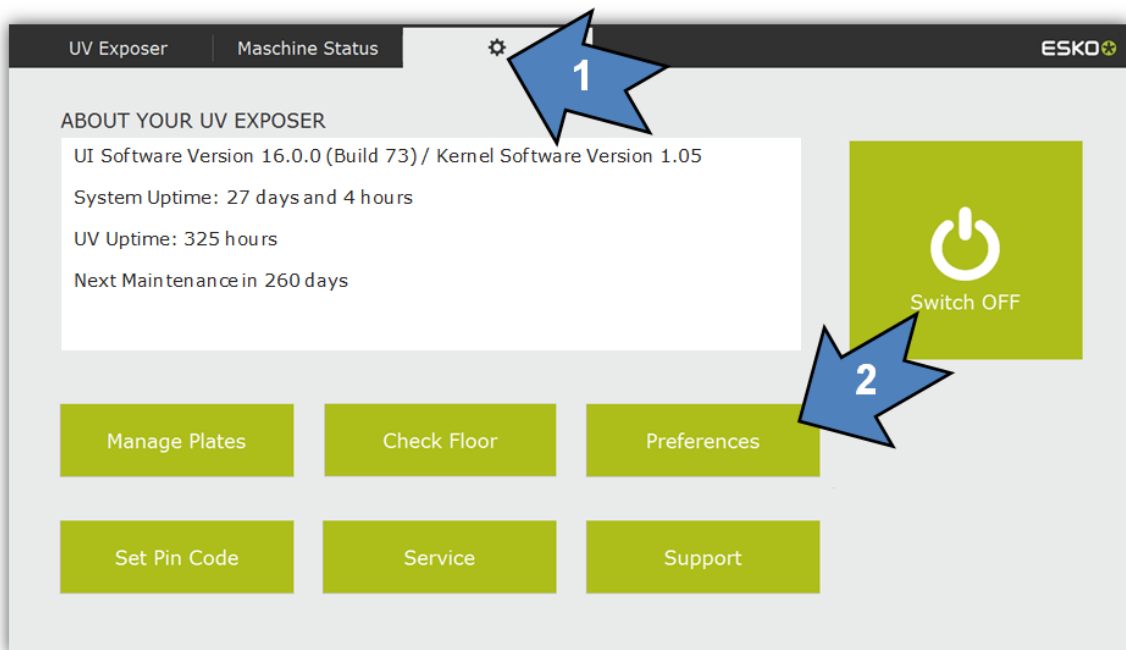


- 7 In the info window the new installed plates are displayed – press „OK“ to continue
- 8 Press "OK" to close the import procedure

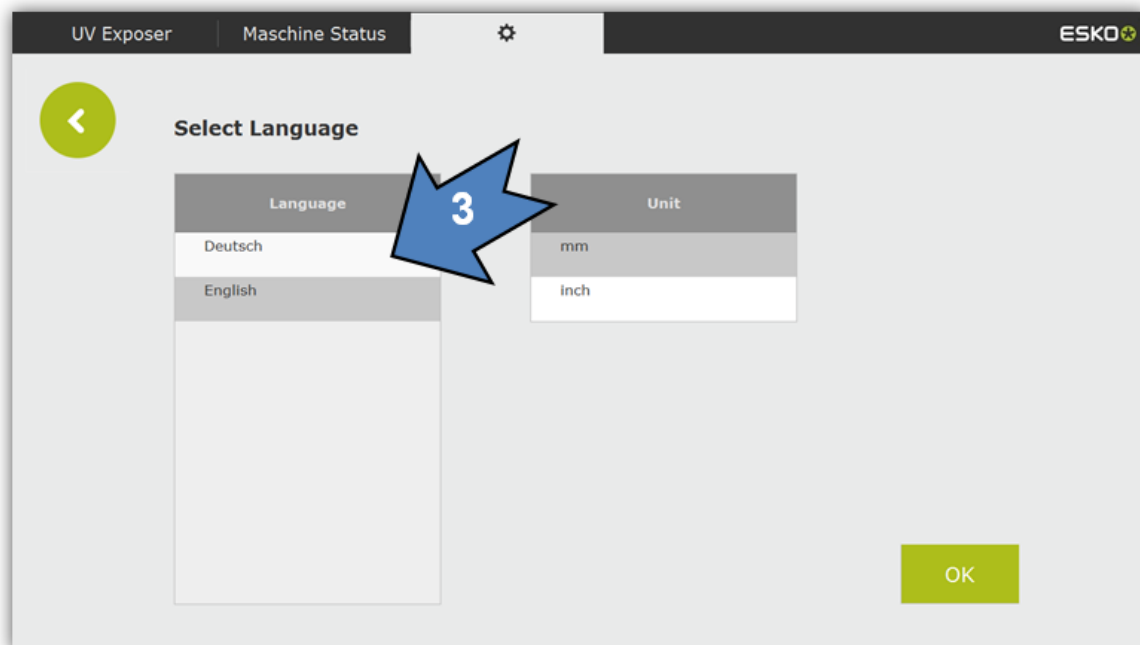


Change language

- 1 Select in the options menu
- 2 Select "Preferences"

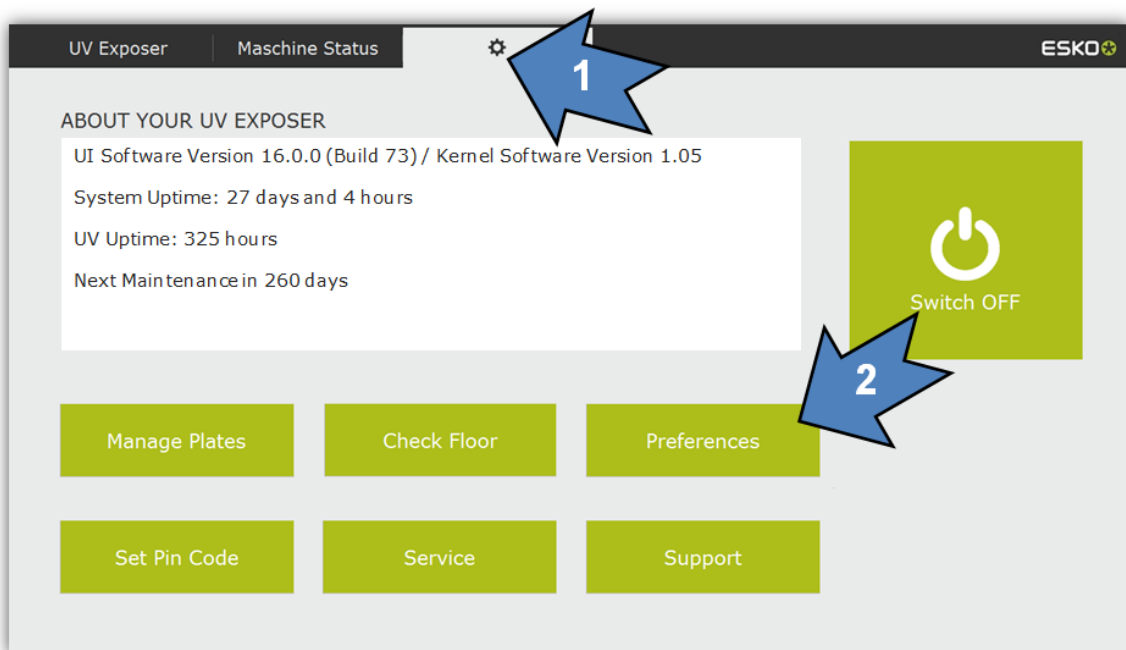


- 3 Select language – the change will become active following a restart

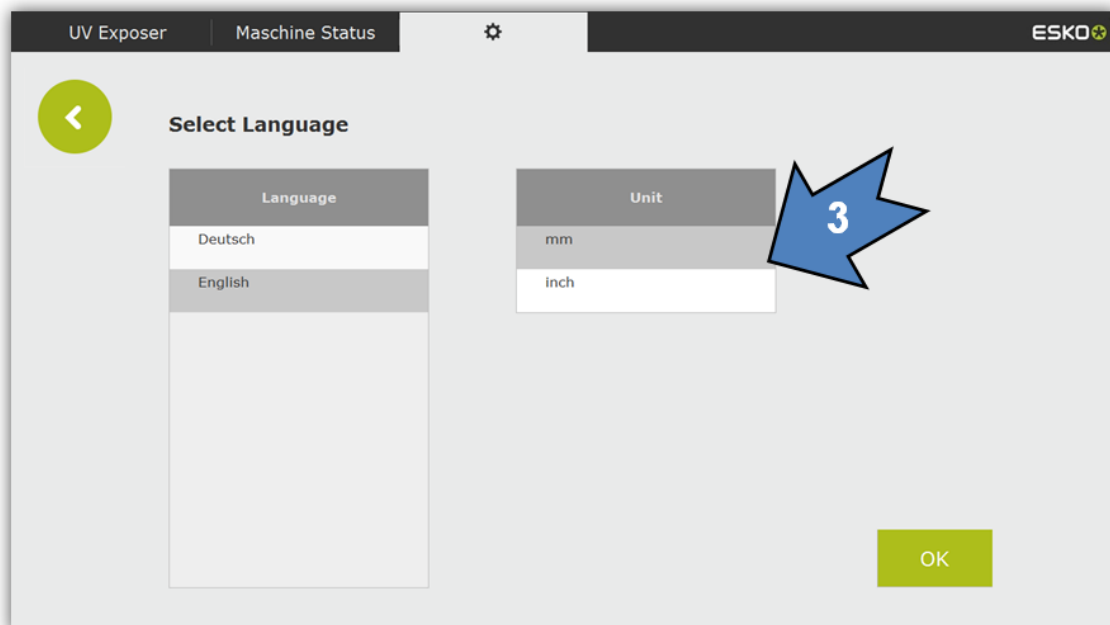


Switch units (inch/mm)

- 1 Select in the options menu
- 2 Select "Preferences"

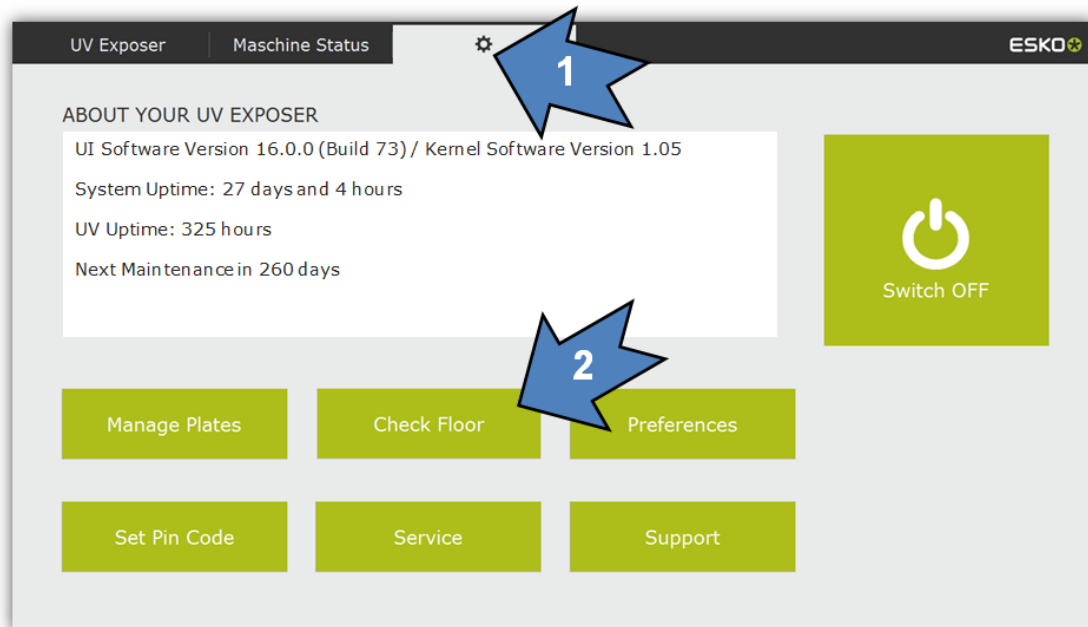


- 3 Select unit and press "OK"

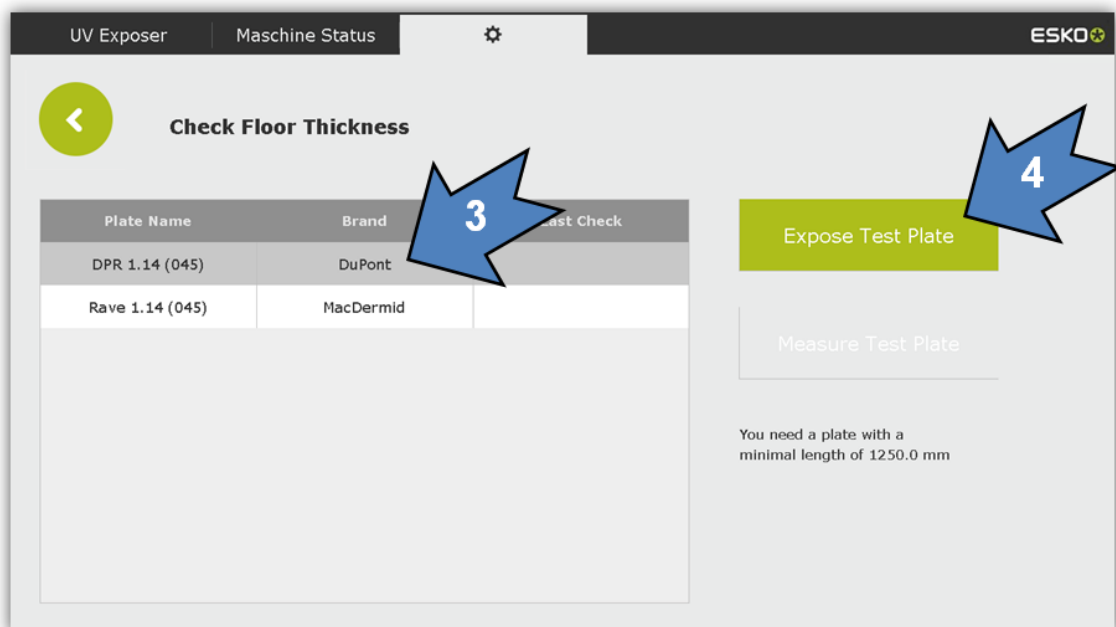


Check back exposure "Check Floor"

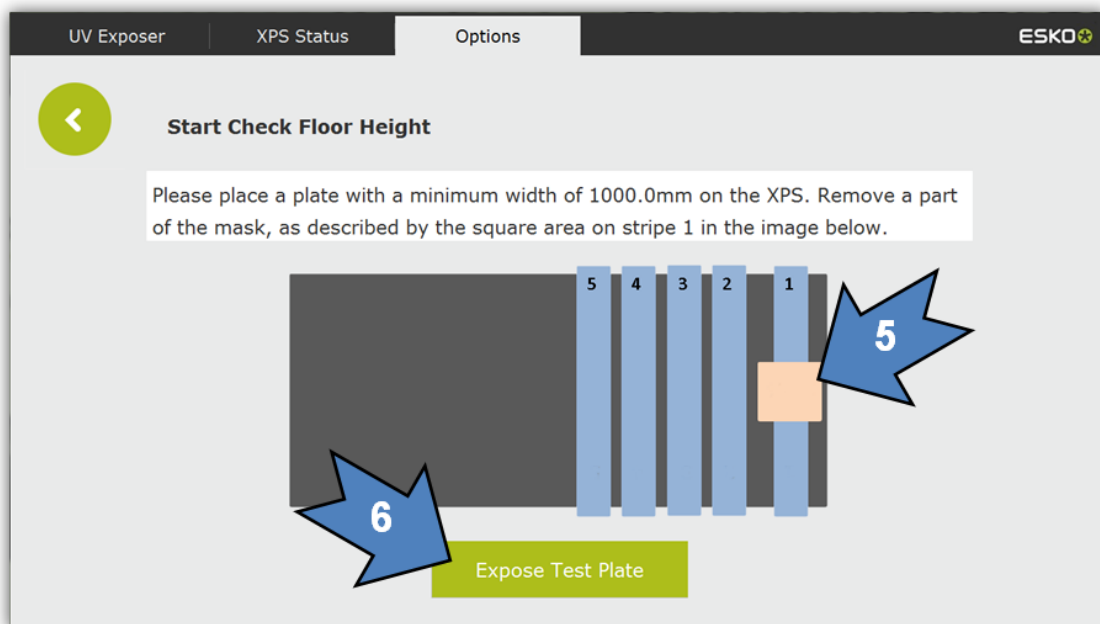
- 1 Select in the options menu
- 2 Select "Check Floor Height"



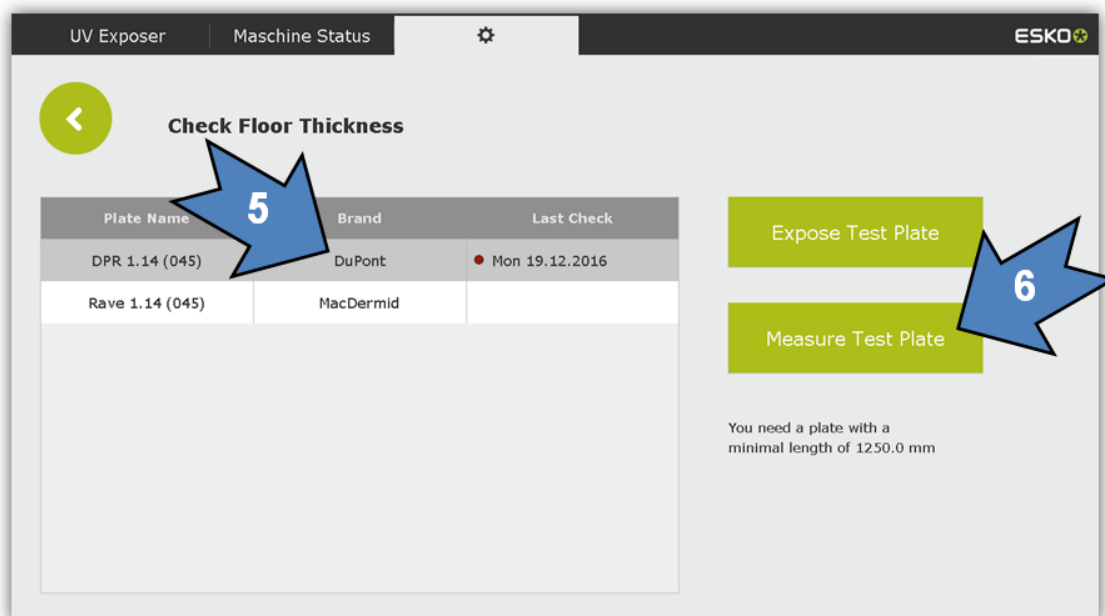
- 3 Select plate
- 4 Tap "Expose Test Plate"



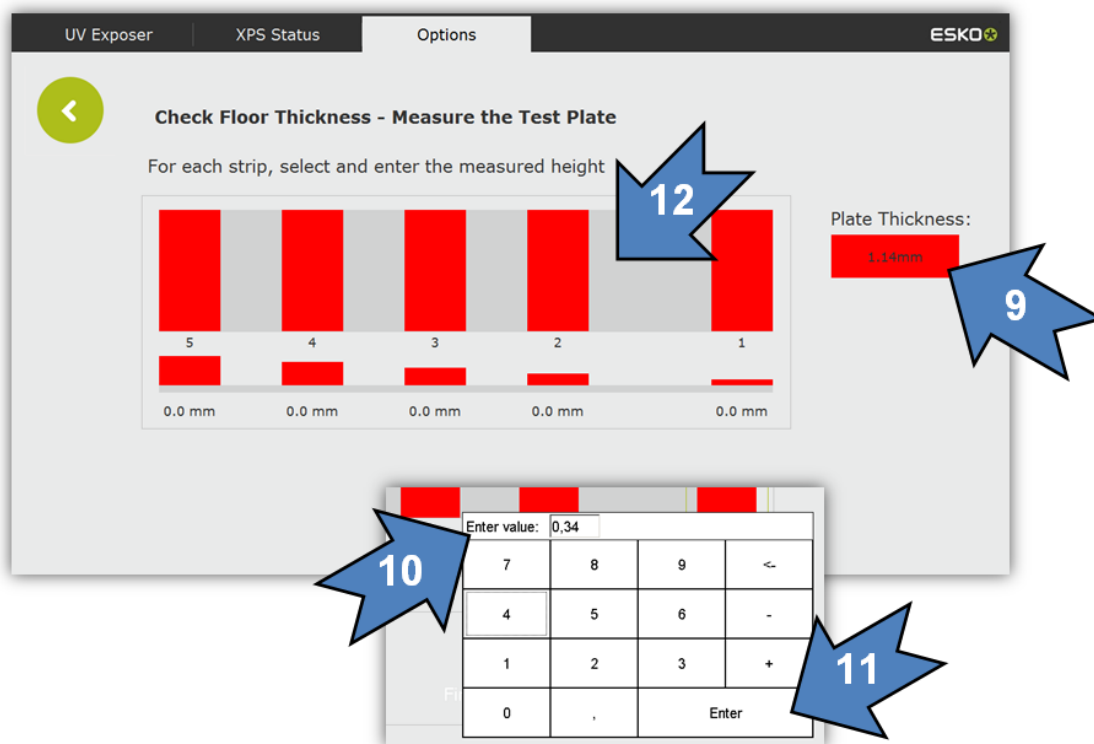
- 5 As outlined on the screen, a part of the black layer of the Flexo Plate is removed.
- 6 Tap "Expose Test Plate" – the plate is exposed



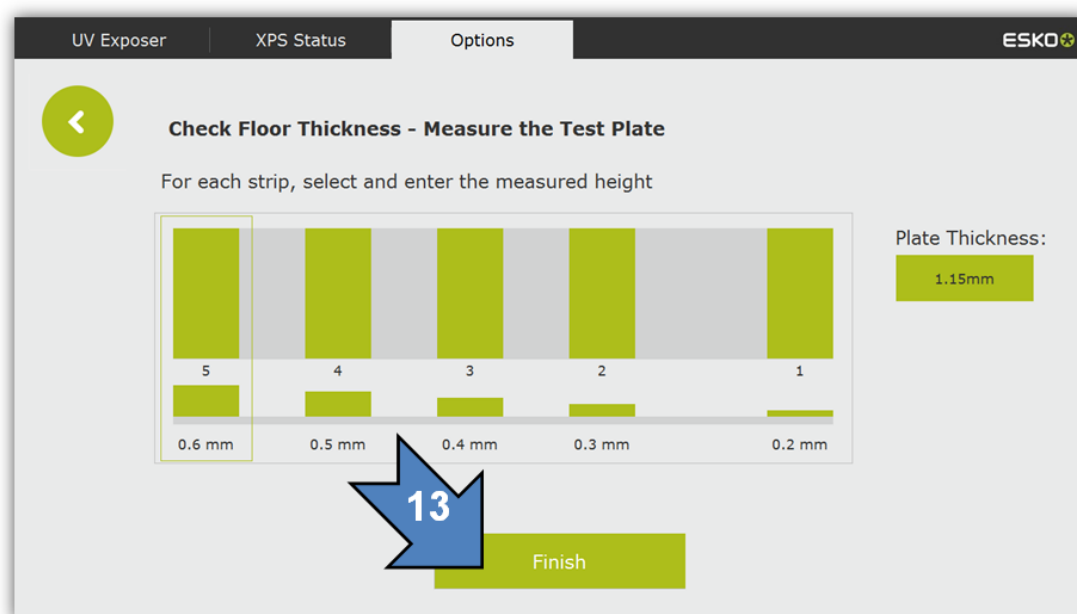
- 7 Once the plate has been developed, select again
- 8 Start "Measure Test Plate"



- 9 Measure the plate thickness in the position in which the layer of the Flexo Plate was previously removed.
- 10 Enter the measured value
- 11 Confirm the value with "Enter"
- 12 Measure the "Floor" thickness, tap the corresponding number and enter the values

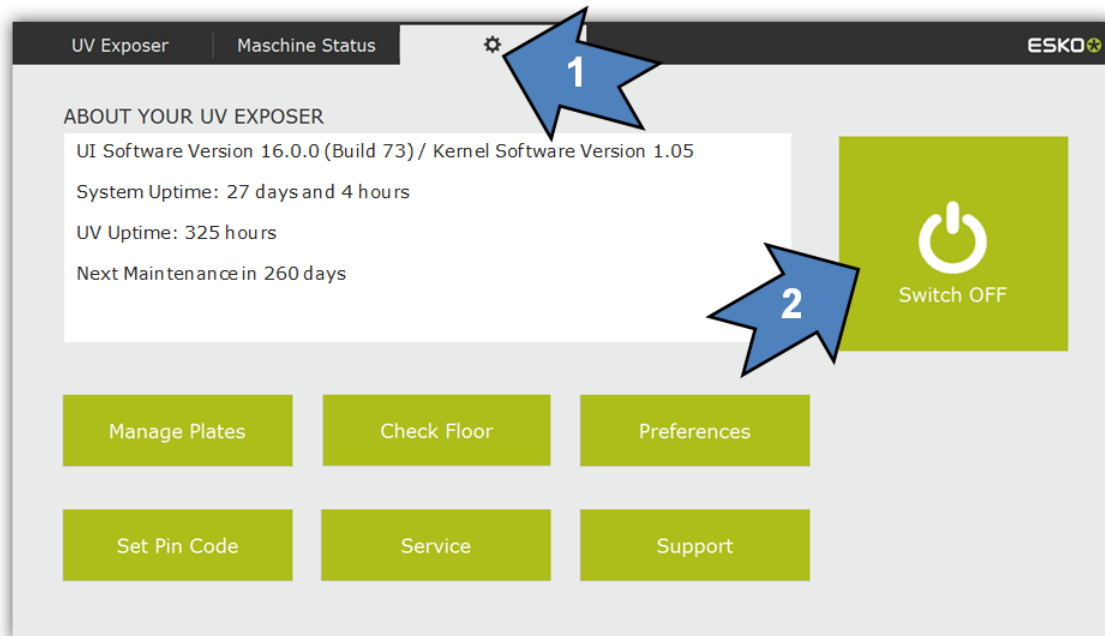


- 13 The values are saved with "Finish"



Shut down XPS Crystal

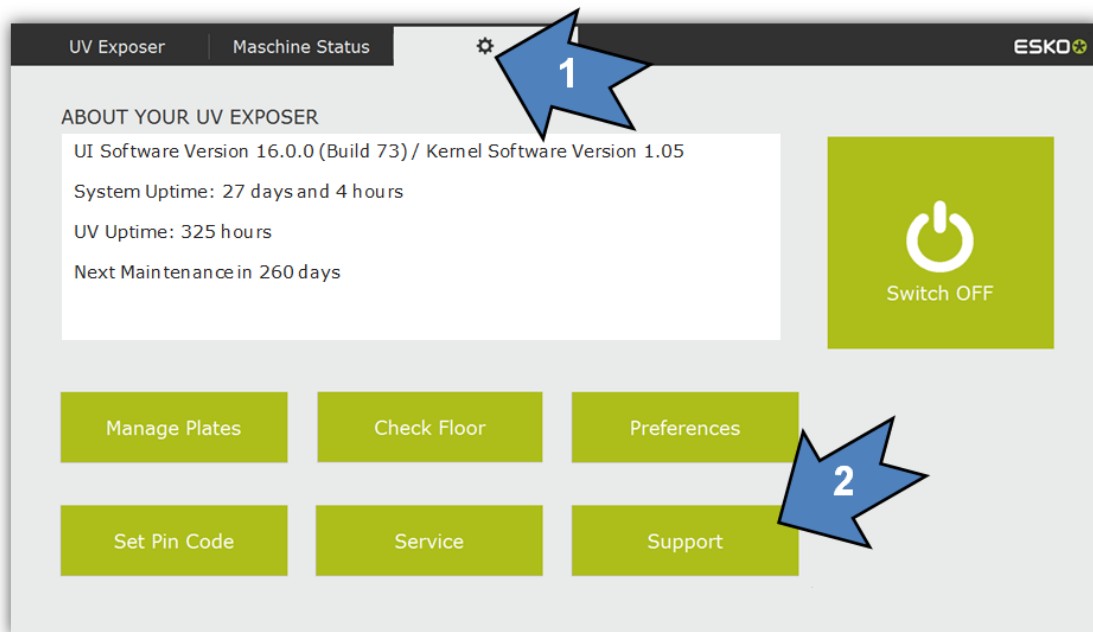
- 1 Select in the options menu
- 2 The system is shut down with "Switch OFF"



Shutting down may take some time. Press the main switch only after the operating system has shut down completely.

Call Teamviewer for service

- 1 Select in the options menu
- 2 Teamviewer is started with "Support"



Support

Contact information can be found on www.esko.com.